

PUN Index GME

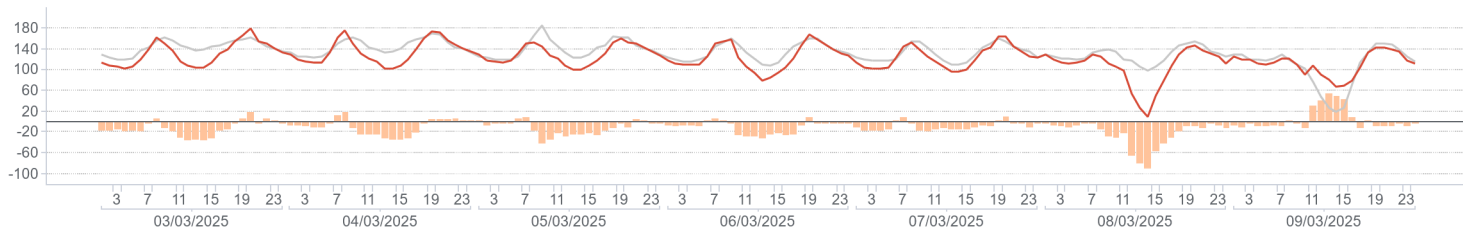
	Average (€/MWh)	Change (€/MWh)	Change (%)
Baseload	123,11	-9,59	-7,2%
<i>Peak</i>	127,99	-16,47	-11,4%
<i>Off-peak</i>	120,40	-5,77	-4,6%
Hourly maximum	178,87		
Hourly minimum	10,00		

Volumes

	MWh	Average (MWh)	Change (%)	
Total supply	National	9.000.246	53.573	-0,2%
	Foreign	1.118.310	6.657	-5,5%
	Total	10.118.555	60.229	-0,8%
Sales	National	4.366.810	25.993	-5,5%
	Foreign	1.063.748	6.332	-3,2%
	Total	5.430.558	32.325	-5,1%
Purchases	National	5.289.219	31.483	-3,9%
	Foreign	141.339	841	-34,1%
	Total	5.430.558	32.325	-5,1%

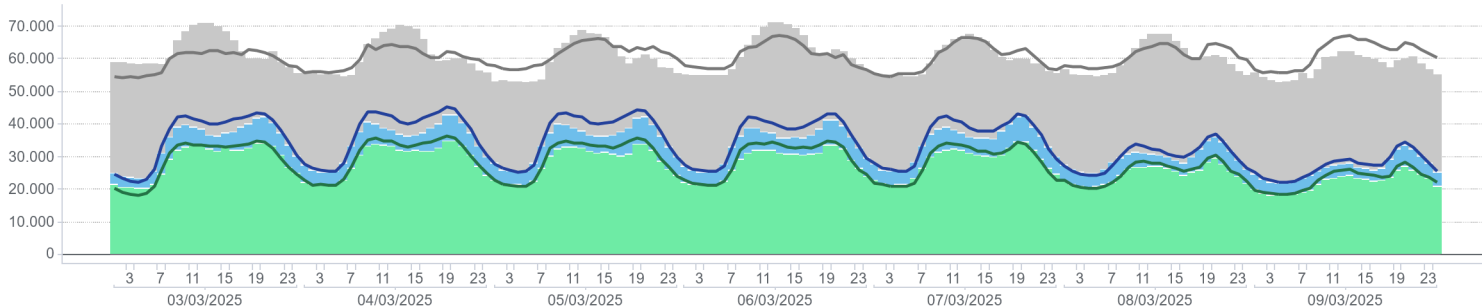
PUN Index GME (€/MWh)

Hourly price / previous week / Price delta



Volumes Supplied, Sold and Purchased (MWh)

Volume unsold / Off-IPEX Sales / On-IPEX Sales / On-IPEX Sales - prev. week / Off-IPEX Sales - prev. week / Volume unsold prev. week



Electricity Supply

	MWh	Change (%)	Structure
IPEX	4.506.894	-3,7%	83,0%
<i>Market participants</i>	2.932.992	-8,3%	54,0%
<i>GSE</i>	521.146	31,3%	9,6%
<i>Foreign zones</i>	1.052.756	-3,1%	19,4%
<i>Balance of PCE schedules</i>	0		0,0%
PCE (including MTE)	923.664	-11,2%	17,0%
<i>Foreign zones</i>	10.992	-14,1%	0,2%
<i>National zones</i>	912.672	-11,1%	16,8%
<i>Balance of PCE schedules</i>	0		0,0%
VOLUMES SOLD	5.430.558	-5,1%	100,0%
VOLUMES UNSOLD	4.687.997	4,6%	
TOTAL SUPPLY	10.118.555	-0,8%	

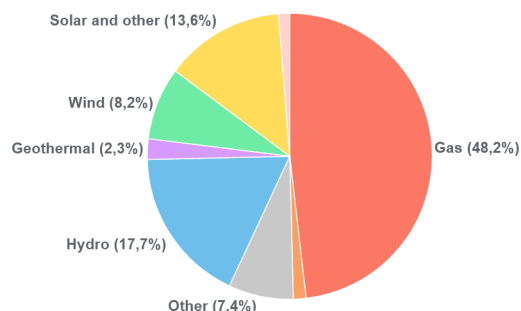
Electricity Demand

	MWh	Change (%)	Structure
IPEX	4.506.894	-3,7%	83,0%
<i>Acquirente Unico</i>	100.673	-9,3%	1,9%
<i>Other market participants</i>	3.492.691	-5,4%	64,3%
<i>Pumped-storage plants</i>	24.864	1,4%	0,5%
<i>Foreign zones</i>	141.339	-34,1%	2,6%
<i>Balance of PCE schedules</i>	747.327	16,7%	13,8%
PCE (including MTE)	923.664	-11,2%	17,0%
<i>Foreign zones</i>	0	-100,0%	0,0%
<i>Acquirente Unico - National zones</i>	9.600	23,1%	0,2%
<i>Other participants - National zones</i>	1.661.391	-0,6%	30,6%
<i>Balance of PCE schedules</i>	-747.327	16,7%	-13,8%
VOLUMES PURCHASED	5.430.558	-5,1%	100,0%
VOLUMES UNPURCHASED	286.636	10,8%	
TOTAL DEMAND	5.717.194	-4,4%	

Volumes Sold by Source

	Total (MWh)	Average (MWh)	Change (MWh)	Change (%)
Conventional	2.487.312	14.805	-2.603	-15,0%
<i>Gas</i>	2.103.195	12.519	-2.735	-17,9%
<i>Coal</i>	63.001	375	-27	-6,6%
<i>Other</i>	321.117	1.911	159	9,1%
Renewable	1.824.613	10.861	1.098	11,2%
<i>Hydro</i>	771.825	4.594	356	8,4%
<i>Geothermal</i>	101.933	607	-2	-0,3%
<i>Wind</i>	357.518	2.128	-177	-7,7%
<i>Solar and other</i>	593.337	3.532	921	35,3%
Pumped storage	54.885	327	-15	-4,4%
Total	4.366.810	25.993	-1.520	-5,5%

Volumes Sold by Source



Zonal price

	Northern IT		Central-northern IT		Central-southern IT		Southern IT		Calabria		Sicilia		Sardegna	
	€/MWh	Var	€/MWh	Var	€/MWh	Var	€/MWh	Var	€/MWh	Var	€/MWh	Var	€/MWh	Var
Baseload	122.70	-7,7%	122.76	-7,8%	122.76	-7,6%	122.76	-7,6%	122.76	-5,9%	129,33	-3,1%	122,58	-2,0%
Peak	127,24	-12,0%	127,24	-12,1%	127,23	-11,5%	127,23	-11,5%	127,23	-7,4%	140,25	-11,6%	126,75	3,8%
Off-peak	120,18	-5,0%	120,27	-5,1%	120,27	-5,1%	120,27	-5,1%	120,27	-5,1%	123,26	3,1%	120,27	-5,1%
Hourly maximum	175,68		175,68		175,68		175,68		175,68		279,00		175,68	
Hourly minimum	10,00		10,00		10,00		10,00		10,00		0,00		10,00	

Zonal volumes

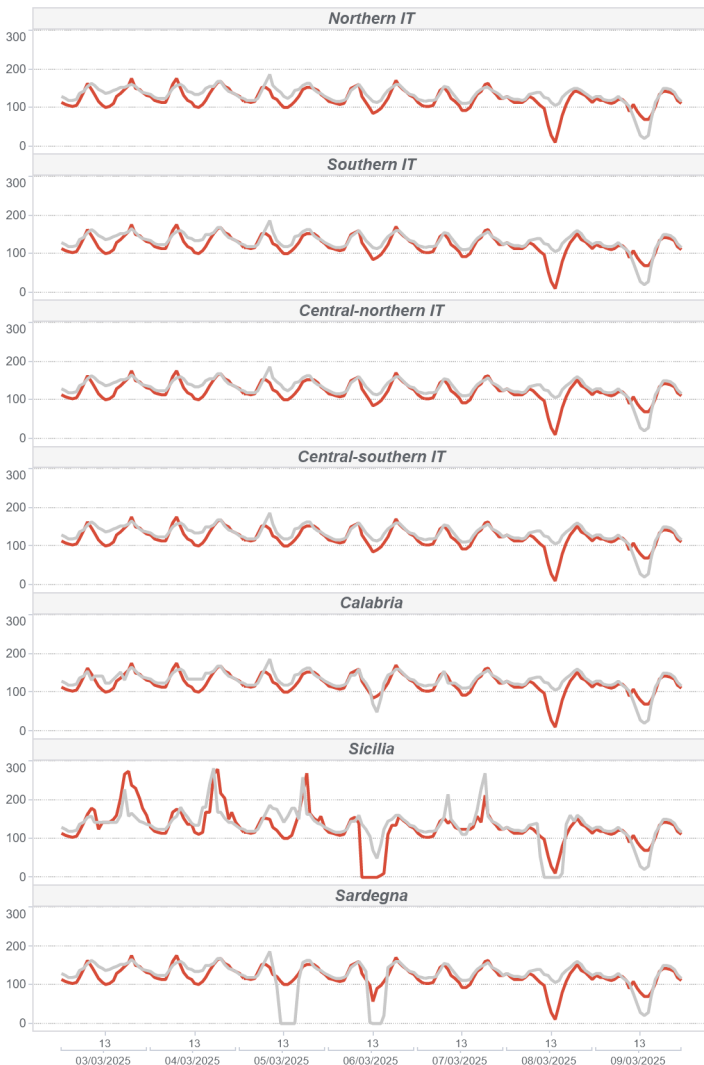
		Northern IT		Central-northern IT		Central-southern IT		Southern IT		Calabria		Sicilia		Sardegna	
		MWh	Var	MWh	Var	MWh	Var	MWh	Var	MWh	Var	MWh	Var	MWh	Var
Total supply	Total	4.524.208	-102.779	414.024	25.394	1.488.964	45.840	1.043.699	37.102	560.434	-44.640	667.283	10.928	301.634	9.315
Sales	Total	2.196.020	-195.730	333.820	12.737	570.167	-31.341	494.730	-12.660	262.472	-35.795	278.421	4.476	231.180	3.036
Purchase	Total	3.033.490	-138.765	458.749	-16.847	935.563	-34.135	319.990	-15.695	101.117	-2.856	300.611	-3.911	139.699	-5.210
Total supply	Average	26.930	-2,22%	2.464	6,53%	8.863	3,18%	6.212	3,69%	3.336	-7,38%	3.972	1,67%	1.795	3,19%
Sales	Average	13.072	-8,18%	1.987	3,97%	3.394	-5,21%	2.945	-2,50%	1.562	-12,00%	1.657	1,63%	1.376	1,33%
Purchase	Average	18.056	-4,37%	2.731	-3,54%	5.569	-3,52%	1.905	-4,68%	602	-2,75%	1.789	-1,28%	832	-3,60%

Volumes sold by Source. Hourly Average

		Northern IT		Central-northern IT		Central-southern IT		Southern IT		Calabria		Sicilia		Sardegna	
		MWh	Var	MWh	Var	MWh	Var	MWh	Var	MWh	Var	MWh	Var	MWh	Var
Conventional	Total	8.367	-16,3%	744	-7,5%	1.548	-22,8%	1.574	-12,2%	1.154	-16,4%	656	-0,4%	764	-1,4%
Gas		7.375	-18,4%	671	-9,6%	1.303	-26,4%	1.305	-14,6%	1.012	-20,6%	553	-7,8%	299	0,6%
Coal		-	-	-	-	-	-	-	-	-	-	-	375	-6,6%	
Other		992	3,9%	73	17,9%	245	4,9%	269	1,9%	142	33,3%	103	75,3%	89	18,9%
Renewable	Total	4.517	11,7%	1.243	12,3%	1.734	17,2%	1.371	11,6%	409	3,5%	1.002	3,0%	585	9,0%
Hydro		2.603	1,9%	354	17,6%	777	19,3%	476	49,2%	114	-14,7%	181	7,3%	89	-17,9%
Geothermal		-	-	607	-0,3%	-	-	-	-	-	-	-	-	-	-
Wind		30	4,1%	18	-27,2%	322	-25,7%	571	-19,1%	220	9,1%	622	-0,2%	345	19,9%
Solar and other		1.884	29,1%	265	53,0%	636	60,8%	324	59,5%	74	25,3%	199	10,3%	150	7,4%
Pumped storage	Total	188	-5,3%	-	-	112	15,8%	-	-	-	-	0	-	27	-42,0%
Total	Total	13.072	-8,2%	1.987	4,0%	3.394	-5,2%	2.945	-2,5%	1.562	-12,0%	1.657	1,6%	1.376	1,3%

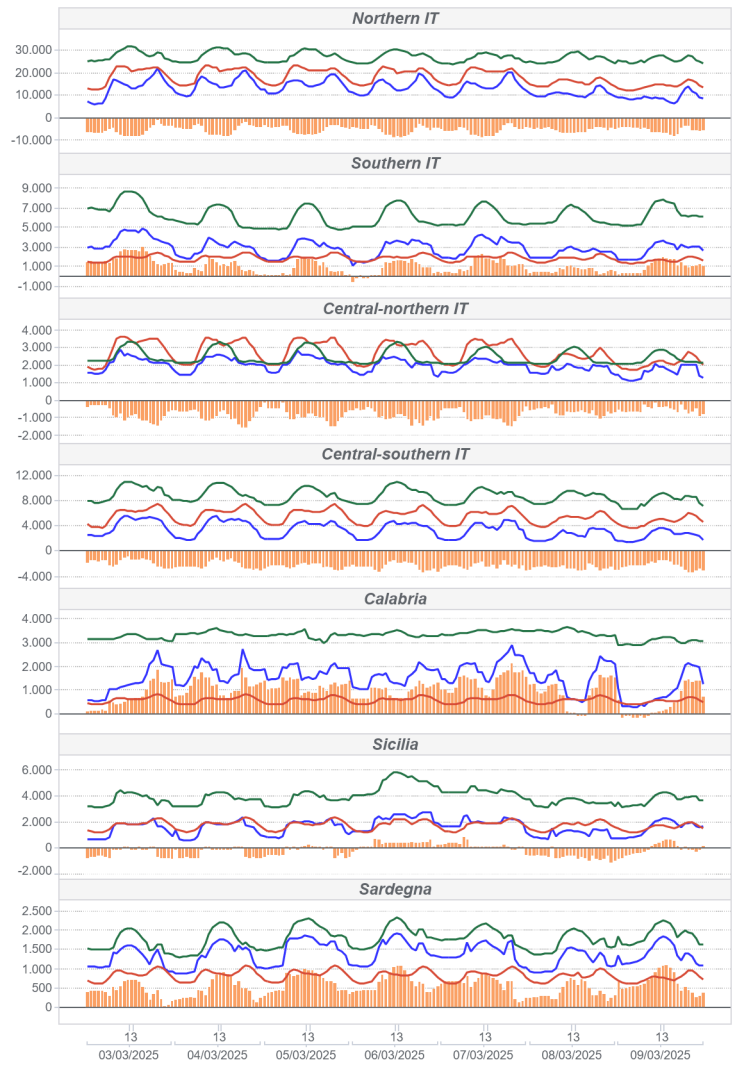
Zonal Price (€/MWh)

● Hourly price ● previous week



Zonal Volumes (MWh)

■ Sales ■ Purchases ■ Offers ■ Flow



Transmissions

		Direction frequency		Average Physical Transmission Rights Assigned		Average flow		Average use of Physical Transmission Rights Assigned		
		Week. n.10	Week. n.9	Week. n.10	Week. n.9	Week. n.10	Week. n.9	Week. n.10	Week. n.9	
France - Northern It.	FRAN-NORD	0,0%	0,0%	0	0	0	0			
	NORD-FRAN			0	0	0	0			
	SVIZ-NORD	100,0%	97,6%	4.030	4.034	2.447	2.236	4,6%	54,1%	
Switzerland - Northern It.	NORD-SVIZ		2,4%	2.780	2.836	0	418	0,0%	-0,2%	
	AUST-NORD	0,0%	0,0%	0	0	0	0			
	NORD-AUST			0	0	0	0			
Montenegro - Central Southern It.	CSUD-MONT	37,5%	52,4%	666	652	397	458	22,4%	36,8%	
	MONT-CSUD	62,5%	47,6%	643	712	493	356	47,9%	23,8%	
	SLOV-NORD	0,0%	0,0%	0	0	0	0			
Slovenia - Northern It.	NORD-SLOV			0	0	0	0			
	GREC-SUD	0,0%	0,0%	25	25	0	0	0,0%	0,0%	
	SUD-GREC			25	25	0	0	0,0%	0,0%	
		Direction frequency		Average limit		Average flow		Saturation frequency		
		Week. n.10	Week. n.9	Week. n.10	Week. n.9	Week. n.10	Week. n.9	Week. n.10	Week. n.9	
Centr.-Northern It. - Centr.-Southern It.	CNOR-CSUD	54,8%	56,5%	3.448	3.624	1.047	1.420	0,0%	0,0%	
	CSUD-CNOR	45,2%	43,5%	3.520	3.411	1.629	1.660	1,2%	5,4%	
	NORD-CNOR	67,9%	71,4%	3.348	3.461	1.480	1.799	1,2%	3,6%	
Northern It. - Central-Northern It.	CNOR-NORD	32,1%	28,6%	3.132	2.827	1.339	994	0,0%	0,0%	
	CNOR-CORS			150	150	0	0	0,0%	61,9%	
	CORS-CNOR	7,7%	0,0%	150	150	72	0	0,0%	61,9%	
Central-Northern It. - Corsica	CSUD-SARD	1,8%	13,1%	720	720	53	105	0,0%	0,0%	
	SARD-CSUD	98,2%	86,9%	887	887	447	459	6,5%	7,7%	
	CSUD-SUD	6,5%	11,9%	3.305	3.494	175	185	0,0%	0,0%	
Centro Sud - Sardegna	SUD-CSUD	93,5%	88,1%	5.323	5.136	1.876	2.064	0,0%	0,0%	
	CORS-SARD	0,0%	0,0%	150	150	0	0	0,0%	0,0%	
	SARD-CORS	100,0%	99,4%	150	150	32	29	1,2%	0,0%	
Southern It.-Calabria	SUD-CALA	14,3%	14,9%	1.586	1.653	537	397	0,0%	0,0%	
	CALA-SUD	85,7%	85,1%	2.350	1.995	908	1.090	0,0%	15,5%	
	SICI-CALA	24,4%	26,2%	780	913	273	241	6,5%	4,8%	
Sicilia - Calabria	CALA-SICI	75,6%	73,8%	856	966	430	476	29,2%	23,2%	
	SICI-MALT	100,0%	97,0%	225	225	127	109	1,2%	4,8%	
	MALT-SICI	0,0%	0,0%	225	225	0	0	0,0%	0,0%	
Sardegna - Corsica AC	COAC-SARD	0,0%	0,0%	23	23	0	0	0,0%	0,0%	
	SARD-COAC	100,0%	100,0%	109	109	75	82	0,0%	0,0%	
		Direction frequency		Average limit		Average flow		Saturation frequency		
		Week. n.10	Week. n.9	Week. n.10	Week. n.9	Week. n.10	Week. n.9	Week. n.10	Week. n.9	
Southern It.-Grecia Coupling	SUD-XGRE		23,8%		500		0	461	100,0%	91,1%
	XGRE-SUD	0,0%	4,8%		500		316	100,0%	73,8%	
	NORD-COUP	0,6%		10.000	10.000	87	0	0,0%	0,0%	
IT Coupling - Northern It.	COUP-NORD	99,4%	100,0%	10.000	10.000	3.131	3.474	0,0%	0,0%	
	COUP-XAUS	17,9%	31,5%	141	141	129	135	15,5%	29,2%	
	XAUS-COUP	82,1%	68,5%	337	315	326	320	75,6%	63,7%	
Coupling - Austria Coupling	COUP-XFRA			2.057	2.052	0	0	0,0%	0,0%	
	XFRA-COUP	100,0%	100,0%	2.880	3.348	2.781	3.319	93,5%	95,8%	
	COUP-BSP	38,7%	47,6%	665	679	614	627	31,0%	39,9%	
Coupling - Slovenia Coupling	BSP-COUP	60,7%	52,4%	575	534	533	529	50,6%	42,9%	

National transmissions (MWh)

Import Limit Export Limit Flow



Foreign transmissions (MWh)

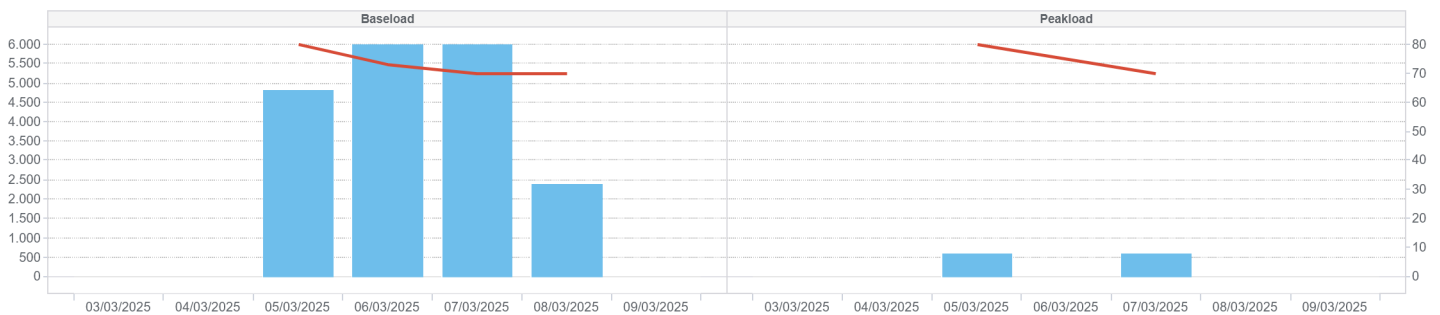
Net Import Net Import Explicit Auction Export Limit Import Limit



MPEG

Prodotti	Minimum price (cent. €/MWh)	Maximum price (cent. €/MWh)	Average price (cent. €/MWh)	Volumes (MW)	Volumes (MWh)	Open position (MW)	Open position (MWh)
03/03/2025							
04/03/2025							
Baseload							
05/03/2025	80,00	80,00	80,00	200	4800,00	200	4.800
06/03/2025	70,00	75,00	73,00	250	6000,00	250	6.000
07/03/2025	70,00	70,00	70,00	250	6000,00	250	6.000
08/03/2025	70,00	70,00	70,00	100	2400,00	100	2.400
09/03/2025							
03/03/2025							
04/03/2025							
Peakload							
05/03/2025	80,00	80,00	80,00	50	600,00	50	600
06/03/2025							
07/03/2025	70,00	70,00	70,00	50	600,00	50	600
TOTALE				900	20.400		

Volumes Average price



MTE

	Minimum price (€/MWh)	Maximum price (€/MWh)	Control price (€/MWh)	Control price (change)	Trades	Volumes (MWh)	Volumes (MW)	Volumes OTC (MW)	Volumes OTC (MWh)	Volumes (change)	Open position (MW)	Open position (MWh)
Baseload												
BL-M-2025-04			120,80	0,0%		0,0	0,0	0,0	0,0		0	
BL-M-2025-05			111,71	0,0%		0,0	0,0	0,0	0,0		0	
BL-M-2025-06			108,07	0,0%		0,0	0,0	2,0	1.440,0		2	1
BL-Q-2025-02			113,51	0,0%		0,0	0,0	2,0	4.368,0	-0,87	11	24
BL-Q-2025-03			123,22	0,0%		0,0	0,0	1,0	2.208,0		7	15
BL-Q-2025-04			131,06	0,0%		0,0	0,0	0,0	0,0		6	13
BL-Q-2026-01			122,21	0,0%		0,0	0,0	0,0	0,0		0	
BL-Y-2026			109,82	0,0%		0,0	0,0	0,0	0,0		0	
Peakload												
PL-M-2025-04			132,00	0,0%		0,0	0,0	0,0	0,0		0	
PL-M-2025-05			118,77	0,0%		0,0	0,0	0,0	0,0		0	
PL-M-2025-06			112,84	0,0%		0,0	0,0	0,0	0,0		0	
PL-Q-2025-02			121,33	0,0%		0,0	0,0	0,0	0,0		0	
PL-Q-2025-03			147,46	0,0%		0,0	0,0	0,0	0,0		0	
PL-Q-2025-04			141,38	0,0%		0,0	0,0	0,0	0,0		0	
PL-Q-2026-01			139,70	0,0%		0,0	0,0	0,0	0,0		0	
PL-Y-2026			117,41	0,0%		0,0	0,0	0,0	0,0		0	

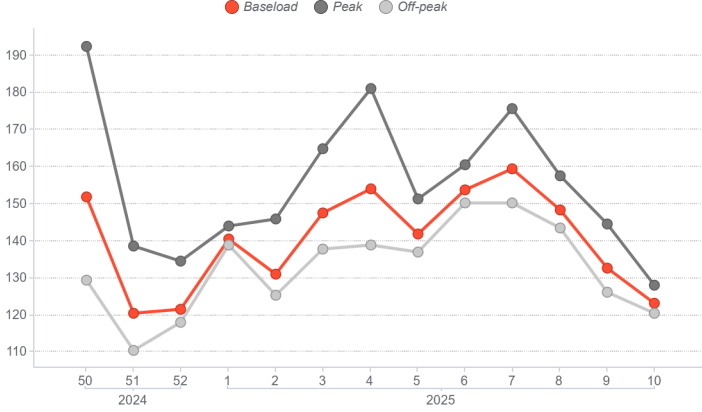
PCE

	Registered transaction (MWh)	% change	Structure
Baseload	453.197	-2,9%	11,7%
Peak	2.168	14,7%	0,1%
Off Peak	2.150		0,1%
Non Standard	3.392.036	-2,7%	87,6%
Bilateral	3.849.551	-2,7%	99,4%
MTE	2.184	5,8%	0,1%
MPEG	20.400	-8,1%	0,5%
Total PCE	3.872.135	-2,7%	100,0%
Net position	2.437.111	-4,6%	62,9%

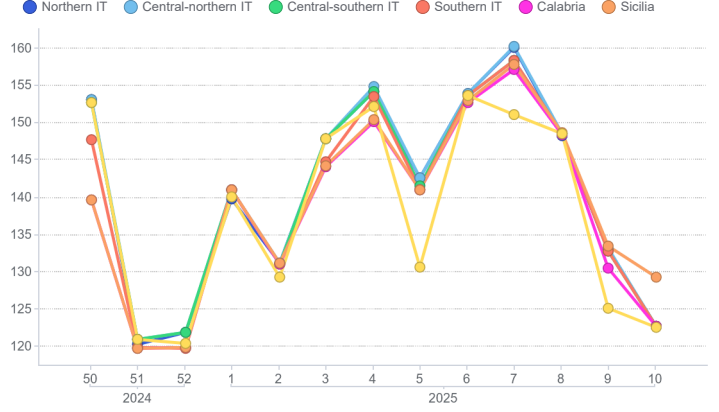
Programs

Schedules	Injection (MWh)	Injection (change)	Withdrawal (MWh)	Withdrawal (change)
Requested	1.213.377	-7,6%	1.670.994	-0,5%
Rejected	289.712	5,9%	3	-11,1%
Registered	923.664	-11,2%	1.670.991	-0,5%
Scheduled deviation	1.513.446	-0,1%	766.120	-12,5%
Balance of schedules	0		747.327	

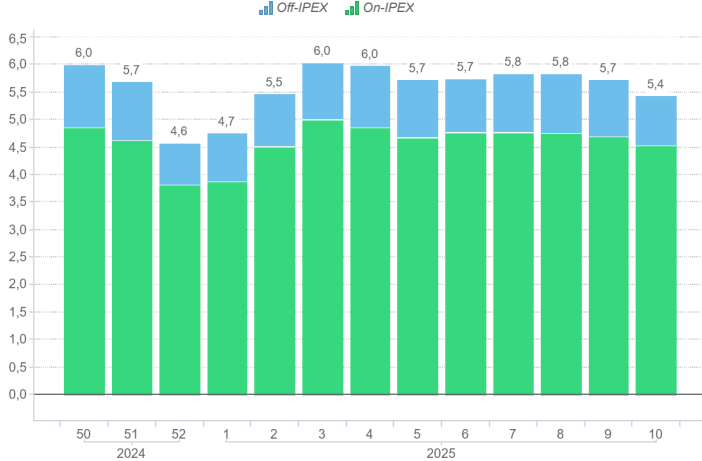
MGP - PUN Index GME (€/MWh)



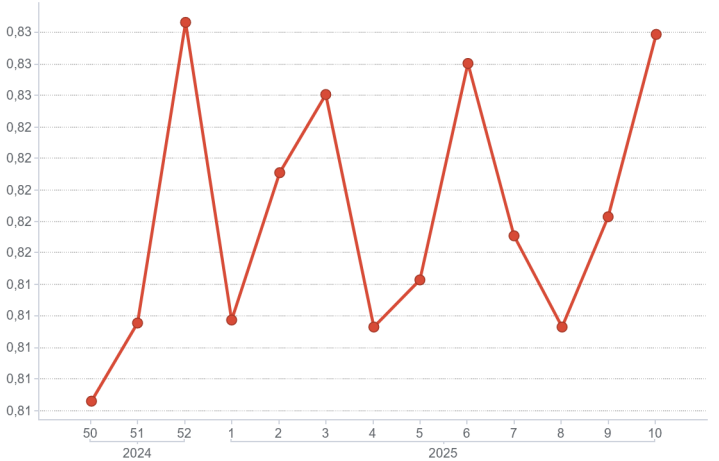
MGP - Zonal Price (€/MWh)



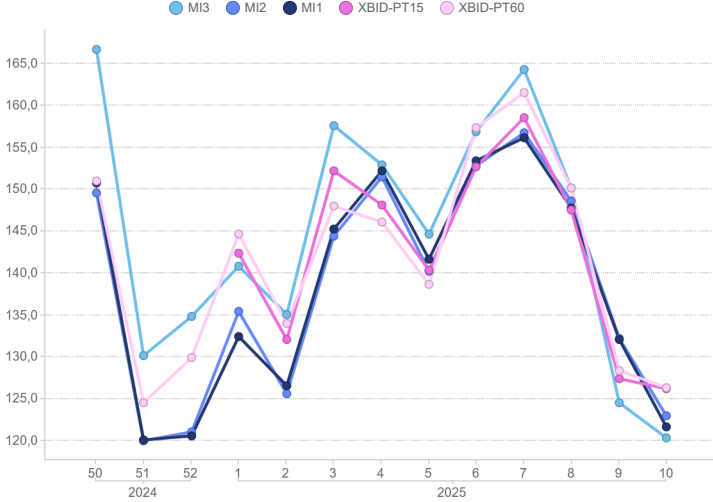
MGP - Volumes (TWh)



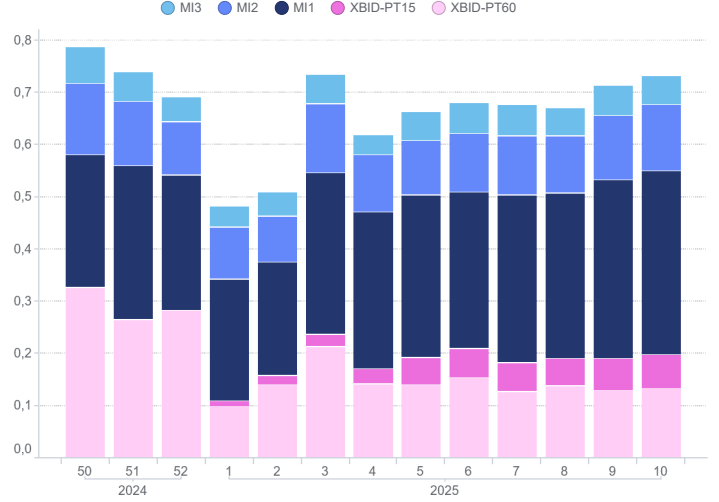
MGP - Liquidity (%)



Intra-Day Market (MI) - Prices (€/MWh)

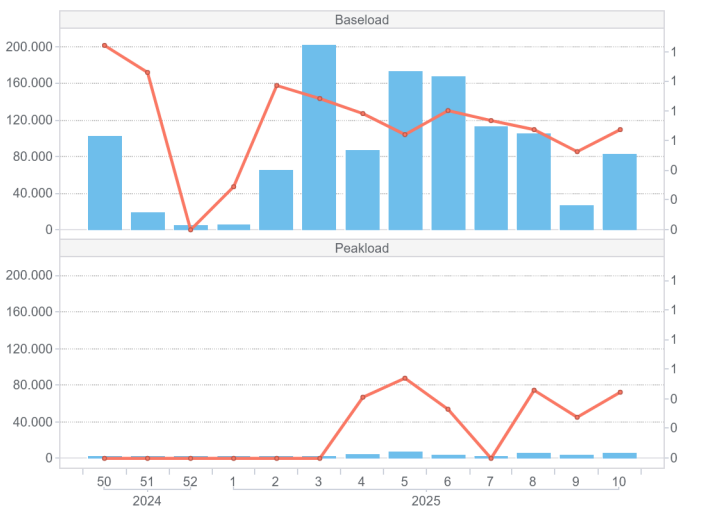


MI - Volumes (TWh)



MPEG

■ Volumes (MWh-axis sx) ▲ Average price (€/MWh-axis dx)



PCE

■ Contracts ■ Net position ▲ Turnover (axis dx)

